

SOL LEWITT: 17 WALL DRAWINGS 1970-2015

Fundación Botín, Summer 2015



Wall Drawing 821A

A white square divided horizontally and vertically into four equal parts, each with a different direction of alternating flat and glossy bands

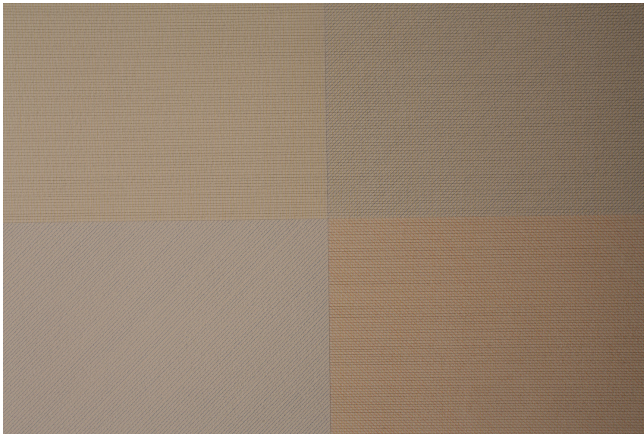
Acrylic paint

First drawn by: Boshko Boskovic, John Hogan

First installation: Sean Kelly Gallery, New York

March 2007

Courtesy of the Estate of Sol LeWitt



Wall Drawing 7A

Within a rectangle, a fourteen-part serial drawing

Black and color pencil

First drawn by: Cristina del Campo, Andrew Colbert, Manuel José Diego Sánchez, José Sanz Amparán.

First installation: Fundación Botín, Santander

June 2015

Collection of Anthony Sansotta, NY

SOL LEWITT: 17 WALL DRAWINGS 1970-2015

Fundación Botín, Summer 2015



Wall Drawing 118

*50 randomly placed points
connected by straight lines.*

Black pencil

First drawn by: Dawn
Shifreen, William Sizemore,
Gary Snyder, Roger Sutro,
David Whittredge

First installation: School of
the Museum of Fine Arts
Gallery, Boston, MA

December 1971

Private collection, courtesy
Paula Cooper, New York, NY



Wall Drawing 413

*Drawing Series IV (A)
(24 drawings)*

India ink and color ink
wash

First drawn by: David
Higginbotham, Jo
Watanabe

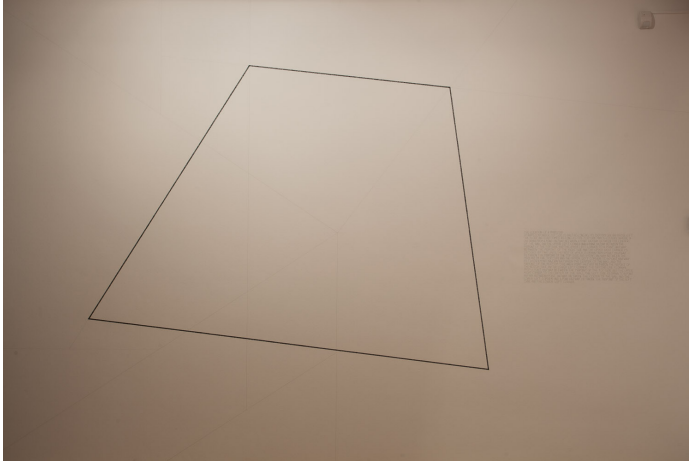
First installation:
Moderna Museet,
Stockholm

March 1984

Courtesy of the Estate of
Sol LeWitt

SOL LEWITT: 17 WALL DRAWINGS 1970-2015

Fundación Botín, Summer 2015



Wall Drawing 237

A trapezoid whose top side is half as long as its bottom side and whose left side is one and a half times as long as the top side and is located where a line drawn from a point halfway between a point halfway between the center of the wall and the upper left corner and a point halfway between the midpoint of the top side and the upper left corner to a point halfway between the midpoint of the right side and the upper right corner is crossed by two lines, the first of which is drawn from a point halfway between the midpoint of the top side and a point halfway between the midpoint of the top side and the upper left corner to a point halfway between a point halfway between the center of the wall and the midpoint of the bottom side and a point halfway between the midpoint of the bottom side and the lower left corner. The second line is drawn from a point halfway between the midpoint of the top side and the upper right corner to the center of the wall, the left side is drawn to a point halfway between a point halfway between the center of the wall and the lower left corner and a point halfway between the midpoint of the left side and the lower left corner.

Black crayon, black pencil description

First drawn by: Sol LeWitt

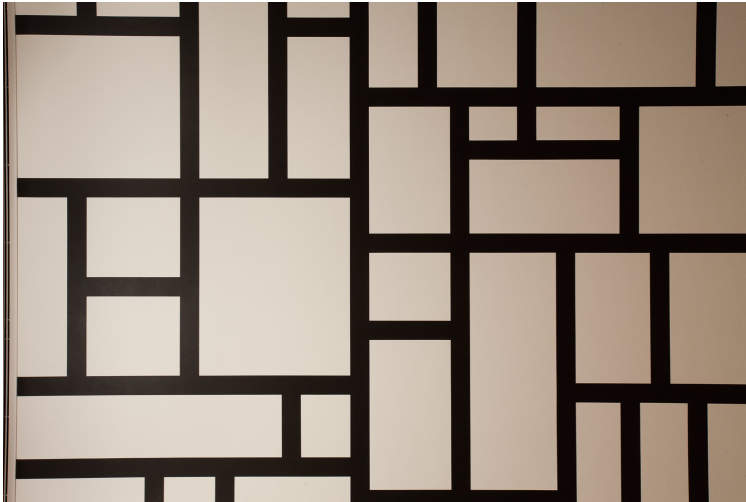
First installation: Galleria Sperone, Turin

June 1974

Courtesy Paula Cooper Gallery, New York, NY

SOL LEWITT: 17 WALL DRAWINGS 1970-2015

Fundación Botín, Summer 2015



Wall Drawing 614
Rectangles formed by 3-inch
(8 cm) wide India ink bands,
meeting at right angles.

India ink

First drawn by: David
Higginbotham, Liam
Longman, Philip Riley, Jim
Rogers, Elizabeth Sacre
First installation: Lisson
Gallery, London

July 1989

Yale University Art Gallery,
Newhaven, CT. Gift of the
artist



Wall drawing 620 (Fig. E)
Form derived from a cubic rectangle,
with color ink washes superimposed.

Color ink wash

First drawn by: Fransje Killars, Roy
Villevoeye

First installation: Galería Juana de
Aizpuru, Madrid

October 1989

Collection of Es Arte Deleitosa, S.L.,
Madrid

SOL LEWITT: 17 WALL DRAWINGS 1970-2015

Fundación Botín, Summer 2015



Wall Drawing 51

All architectural points connected by straight lines

Blue snap lines

First drawn by: P. Giacchi, A.

Giamasco, G. Mosca

First installation: Galleria Sperone & Museo di Torino, Turin

June 1970

Courtesy of the Estate of Sol LeWitt



Wall Drawing 46

Vertical lines, not straight, not touching, uniformly dispersed with maximum density, covering the entire surface of the wall

Black pencil

First drawn by: Sol LeWitt

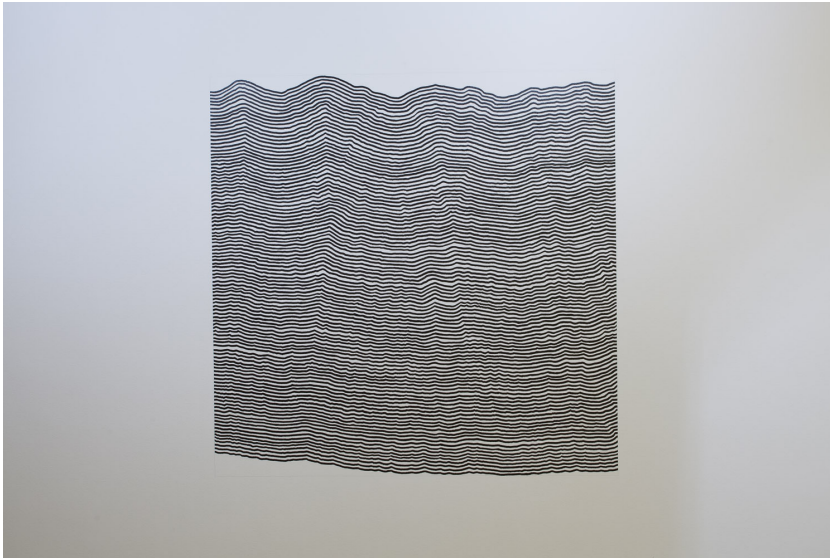
First installation: Yvon Lambert, Paris

May 1970

LeWitt Collection, Chester, CT

SOL LEWITT: 17 WALL DRAWINGS 1970-2015

Fundación Botín, Summer 2015



Wall Drawing 869C

Copied Lines. From the top of a 48-inch (122 cm) square, draw a not straight horizontal line. The line is black. The second line is drawn beneath the first line, as close as possible, imitating the first line. The next line is drawn beneath the second line. Continue copying, until the bottom of the square is reached

Marker or crayon, pencil

First drawn by: Richard Russell

First installation: MIT List Visual Arts Center, Cambridge, MA

1998

Courtesy of the Estate of Sol LeWitt



Wall Drawing 280

A six-inch (15cm) grid covering a yellow wall. Blue lines from the four corners, red lines from the midpoints of the four sides, white lines from the center to points on the grid.

Red, blue and white crayon, black pencil grid, yellow wall.

First drawn by: Diane Bertolo, Linda Brooks, Charles Clough, Alan Hayes, Gary Judkins, Pierce Kamke, Robert Longo, Kevin Noble, Joseph Panone, Robert Reslawsky, Cindy Sherman, Michael Zwack.

First installation: Hallwalls, Buffalo, NY

January 1976

The Doris and Donald Fisher Collection, San Francisco, CA

SOL LEWITT: 17 WALL DRAWINGS 1970-2015

Fundación Botín, Summer 2015



Wall Drawing 386

Stars with three-, four-, five-, six-, seven-, eight-, and nine-points, drawn with a light tone India ink wash inside, an India ink wash outside, separated by a six-inch (15 cm) white band (A-G)

India ink washes

First drawn by: Julie Jarvis, Renée Milliken, Anthony Sansotta.

First installation: Carol Taylor Art, Dallas, TX

January 1983

Courtesy of the Estate of Sol LeWitt

Wall Drawing 110

Yellow arcs from the midpoints of four sides of the wall (ACG 10)

Yellow pencil

First drawn by: Henk Heurter

First installation: Jan Dibbets Residence, Amsterdam

September 1971

Private collection, Amsterdam

SOL LEWITT: 17 WALL DRAWINGS 1970-2015

Fundación Botín, Summer 2015



Wall Drawing 154

Drawing with a 96-inch (240 cm) black outlined square and a 72-inch (180 cm) red line. A horizontal line from the midpoint of the left side towards the middle of the right side

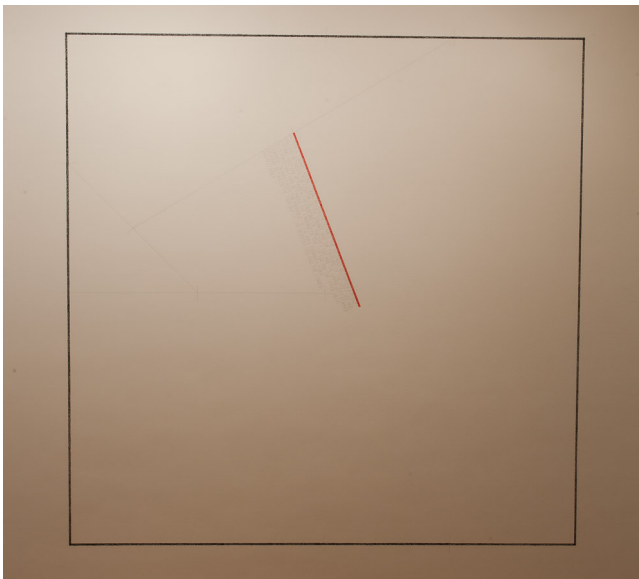
Red and black crayon

First drawn by: Sol LeWitt, Nicholas Logsdail

First installation: The Museum of Modern Art, Oxford

April 1973

Courtesy of the Estate of Sol LeWitt



Wall Drawing 157

Drawing with a 96-inch (240 cm) black outlined square and a 72-inch (180 cm) red line. A diagonal line centered on the axis between the upper left and the lower right corners

Red and black crayon

First drawn by: Sol LeWitt,
Nicholas Logsdail

First installation: The Museum of
Modern Art, Oxford

April 1973

Courtesy of the Estate of Sol LeWitt

SOL LEWITT: 17 WALL DRAWINGS 1970-2015

Fundación Botín, Summer 2015

Wall Drawing 208

Within a 96-inch (240 cm) black square, a red line equal in length to half the distance between a point halfway between the center of the square and the midpoint of the left side and a point halfway between the midpoint of the left side and the upper left corner to a point halfway between the midpoint of the top side and the upper right corner, drawn from the midpoint of that axis toward a point halfway between the midpoint of the bottom side and the lower right corner

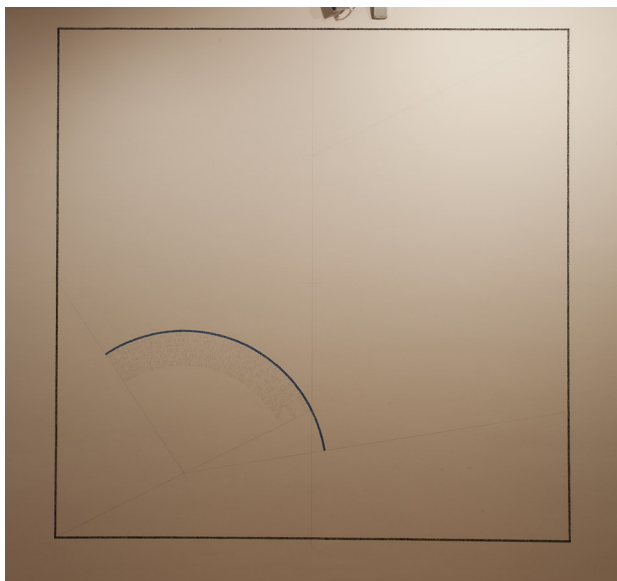
Red and black crayon, black pencil description

First drawn by: Harvel Wardwell

First installation: Portland Center for the Visual Arts, Portland, OR

September 1973 /? Oct-nov?

Courtesy of the Estate of Sol LeWitt



Wall Drawing 213

Within a 96-inch (240 cm) black square, a blue arc whose radius is equal to the distance between a point halfway between the upper right corner and a point halfway between the center of the square and the midpoint of the top side and whose center is located halfway between the lower left corner and a point halfway between the center of the square and midpoint of the bottom side, drawn from a point on the axis between the midpoint of the left side and the centerpoint of the arc to a point on the axis from a point halfway between the midpoint of the right side and the lower right corner and the center of the arc

Blue and black crayon, black pencil description

First Drawn by: Sol LeWitt, Harvel Wardwell

First Installation: Portland Center for the Visual Arts, Oregon

September 1973

Private collection, Amsterdam